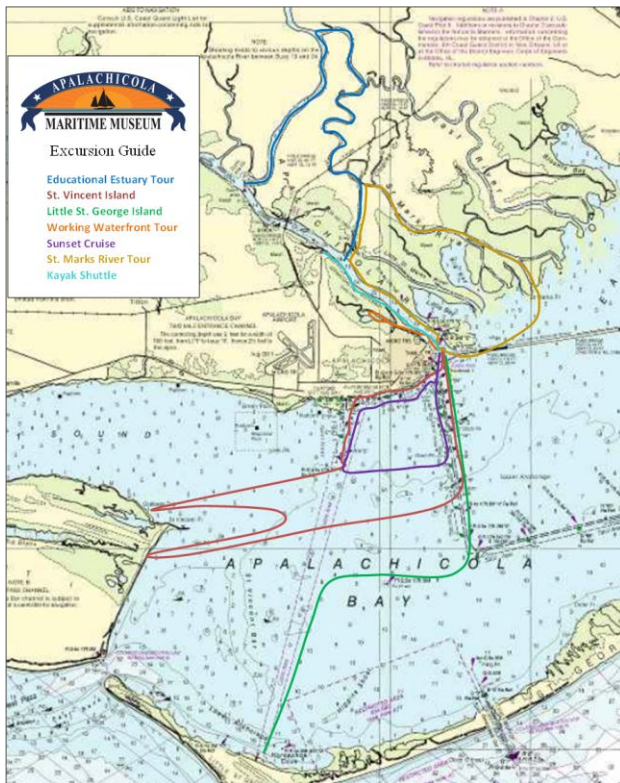


APALCHICOLA MARITIME MUSEUM EDUCATIONAL TOURS



MOTOR VESSEL PRE DEPARTURE PRINT AND SAFETY PROCEDURES AND RISK ADVISORY

Welcome to the Apalachicola River and Apalachicola Bay. Experiencing the river delta area through a power vessel provides a close up view of the river and out islands and the ecological treasures therein but poses some risks which you must understand and acknowledge before departure. Please read through this document thoroughly and ask questions of the AMM staff before making the decision before undertaking a trip. We have provided a video which must be viewed by all passengers and the following written safety information. Your name and signature acknowledging your understanding of risks and emergency procedures must be provided for all passengers before boarding. Please ask any questions to help ensure all of your concerns are addressed and you fully understand the rules of operation and safety procedures.

SAFETY RULES

- WHEN IN THE BACK WATERS, COMMUNICATION WITH THE MAINLAND BY CELL PHONE OR VHF RADIO IS OFTEN LOST AND WE ARE ON OUR OWN, INCREASING THE IMPORTANCE OF FOLLOWING ALL SAFETY PROTOCOLS AND INSTRUCTIONS FROM THE CAPTAIN AND CREW.
- STAY SEATED WHEN THE VESSEL IS UNDERWAY.
- CONTROL CHILDREN TO ENSURE THEIR SAFETY. DO NOT PERMIT RUNNING ABOUT ON DECK OR CRAWLING ABOUT ON RAILS.
- ALWAYS BE SURE OF YOUR FOOTING AND USE HAND RAILS WHEN POSSIBLE.
- ALWAYS FOLLOW INSTRUCTIONS ISSUED BY THE CAPTAIN OR CREW.
- USE EXTREME CAUTION WHILE ON THE RAMP, FLOATING DOCK, AND WHILE BOARDING AND DISEMBARKING.
- WEAR SHOES WITH GOOD TRACTION AND SOFT SOLES (Athletic Shoes / Boat Shoes).
- DRESS IN LAYERS. EVEN IN SUMMER A WIND BREAKER TYPE JACKET CAN COME IN HANDY!

- STAY SEATED WHEN LEAVING AND RETURNING TO THE DOCK AND AT THE REQUEST OF THE CAPTAIN OR CREW.
- ALL GATES ARE TO REMAIN CLOSED WHILE UNDERWAY AND WHILE DOCKING.
- MARINE HEAD BEHIND THE HELM, PLEASE ASK FOR ASSISTANCE IF NEEDED TO ENSURE PROPER OPERATION.
- PLEASE SUPERVISE CHILDREN AND YOUNG ADULTS CLOSELY. THE CAPTAIN AND CREW ARE TOO BUSY KEEPING WATCH ON THE WATER FOR HAZARDS TO BE DISTRACTED BY UNNECESSARY SAFETY CONCERNS.
- PASSENGERS INTOXICATED UPON ARRIVAL AT THE DOCK WILL NOT BE ALLOWED TO BOARD THE VESSEL.
- ALCOHOL CONSUMPTION WILL BE TERMINATED AT THE REQUEST OF THE CAPTAIN IF DEEMED A SAFETY CONCERN. IF A PASSENGER FAILS TO FOLLOW THE CAPTAIN'S ORDER TO CEASE ALCOHOL CONSUMPTION, THUS PRESENTING A RISK TO OTHER PASSENGERS, THE TRIP WILL BE IMMEDIATELY CANCELED AND RETURN TO THE DOCK. LEGAL AUTHORITIES WILL BE NOTIFIED AND ASKED TO ASSIST IF NECESSARY.
- YOU MAY WEAR A PFD BY REQUEST AT ANYTIME, JUST ASK, ESPECIALLY IF YOU ARE CONCERNED ABOUT NOT BEING A STRONG SWIMMER.
- ENCOUNTERING HAZARDS WHILE UNDERWAY IS COMMON: SUBMERGED LOGS, SWIMMING WILDLIFE AND MARINE MAMMALS MAY ALL CAUSE UNEXPECTED MOVEMENT OF THE VESSEL. STAY PREPARED WHILE MOVING ABOUT AND BE SURE OF YOUR SEATING.
- PROPER WEIGHT DISTRIBUTION IS CRITICAL TO SAFE AND COMFORTABLE OPERATING. YOU MAY BE ASKED TO CHANGE LOCATIONS TO PREVENT LISTING OR FOR OTHER REASONS AS DETERMINED BY THE CAPTAIN.

SAFETY EQUIPMENT

- PFDs (personal floatation devices) STOWED IN THE OVERHEAD RACK- There is at least one PFD for each passenger on board. Adult and child sizes are available. For very young children and infants please bring your own PFD for their use, ours may not fit correctly and thusly may be uncomfortable. The Crew will assist in the unlikely event the Captain determines that all passengers are required to don a PFD.
- Fire Extinguishers: there are three fire extinguishers on board, one toward the port bow, one at the port stern, and one at the helm. A bucket is also available for collecting and spreading water.
- Throw ring and rescue line on the bow area outside the bow gate.
- Boat hooks at the stern near the head.
- EPIRB – Vessel equipped with an automatic Emergency Position Indicating Radio Beacon.

EMERGENCY PROCEDURES

Fire

Fire aboard any boat is a serious crisis. Be sure you have the correct number and type of extinguishers aboard and that they are fully charged and operational. Different extinguisher types are used to put out various types of fires. For example, Class A extinguishers are used against wood, paper or cloth fires, and Class B extinguishers are used to fight gasoline or oil fires. Make sure everyone aboard knows where the extinguishers are located and how to operate them.

Taking on Water

Should your vessel begin to take on water, get the vessel to shore as quickly as possible. In case a through-hull fitting below the waterline fails, have on hand a supply of tapered wooden bungs you can drive into the hole. If you strike a submerged object and suffer a serious hull breach, signal or radio for assistance and try to stuff something into the void in the hull. Anything that slows down the incoming water will help. Additionally, be certain everyone dons a personal flotation device (PFD).

Capsizing

Every capsizing is dangerous. If your vessel has capsized yet is still afloat, do not leave it in an attempt to find help. On small inland bodies of water, your boat may drift to shore on its own, so stay with it. Make sure you account for every passenger/crew member. For offshore boaters, activate your emergency position-indicating radio beacon (EPIRB). If your life raft has automatically deployed and filled, climb aboard immediately. If your raft is equipped with a radio, begin sending a "Mayday" distress call.

Man Overboard

If someone falls over the side of a vessel, throw him a life ring with an attached man overboard pole and flag. Begin executing your man overboard (MOB) procedures. Approach the person from the lee, allowing the wind to carry him toward you. MOB drills should be practiced in advance. Do them on a calm day in protected waters. Make sure the "victim" is wearing a PFD and is a strong swimmer.

Foundering

In heavy seas, steer clear of lee shorelines. If necessary, alter course until conditions improve. If your vessel goes hard aground, it may be broken up by waves and rocks, forcing you to abandon ship. If grounding appears imminent, ready your abandon ship bag, radio "Mayday" and make preparations to go into the water.

Trip Date and departure time			
Manifest number			
#	Name and Signature consistent with manifest	#	Name and Signature consistent with manifest
1		21	
2		22	
3		23	
4		24	
5		25	
6		26	
7		27	
8		28	
9		29	
10		30	
11		31	
12		32	
13		33	
14		34	
15		35	
16		36	
17		37	
18		38	
19		39	
20		40	